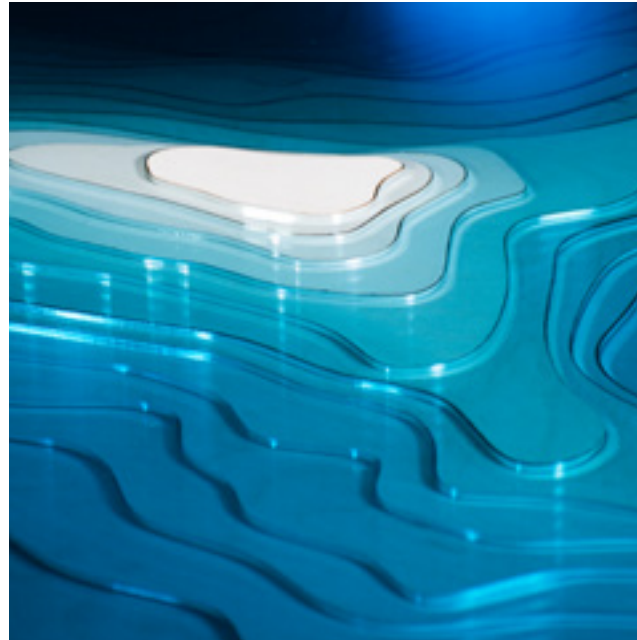


THE ABYSS



COLLECTION

2022

D U F Y  
L O N D O N

"And when gaze long into an Abyss, the abyss also gazes into you."

( F R I E D R I C H   N I E T Z S C H E )







First sketched out in 2012, Abyss is a study of depth and our perception of it. Glass and wood combine to create a vivid three-dimensional viewing canvas; yellow-tinted birch reacts with layers of blue glass to produce an array of luxurious turquoise colours.

Every work is carefully crafted by our team of in-house craftspeople to achieve its absorbing, mesmeric effect; inviting the viewer to stare down and to lose one's self in the great unknown.

"The idea is simply trying to recreate depth, we use layers of glass and by layering the glass it changes the color of the light flow through different thicknesses giving different colors of turquoise, blues going down all the way to almost black at the bottom. This is the same effect that happens in the ocean as the water gets deeper colors change, the color of the water is the same at any depth, however, having a layer on top of layer affects how the light reacts with the water and how the impression of depth is changed."

( C H R I S T O P H E R   D U F F Y )





(L) 240cm (W) 120cm (H) 75cm  
Guangzhou





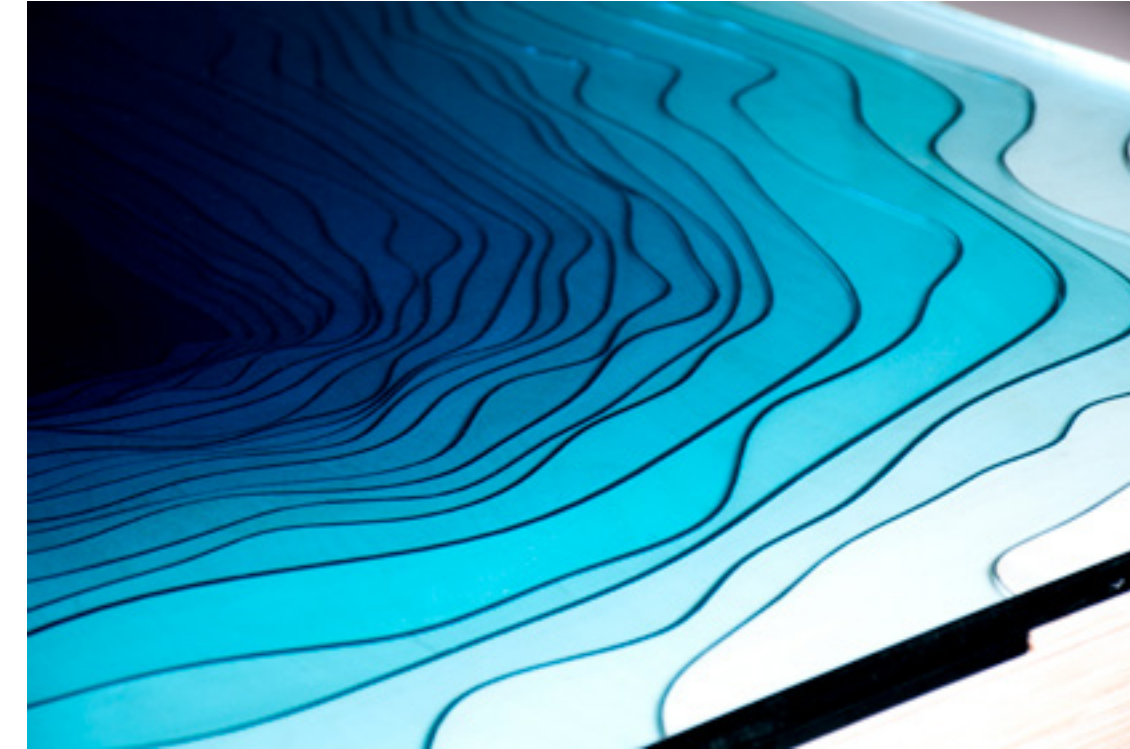






Luxurious, limited edition, and  
statement pieces of modern furniture.

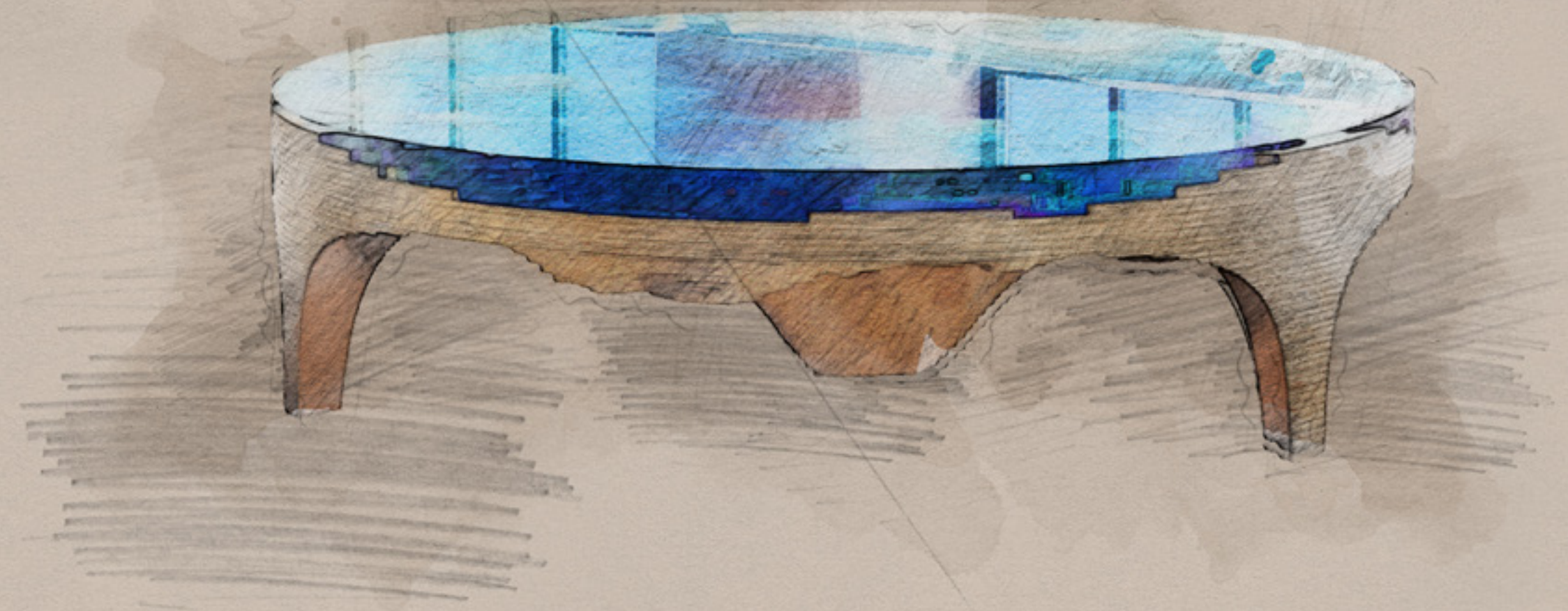
Bespoke pieces available on request.





"One mustn't look at the abyss, because there is at the bottom an inexpressible charm which attracts us."

( G U S T A V E F L A U B E R T )







2023 Edition  
(W) 110cm (H) 47cm

Available to preorder now







# A B Y S S S T O N E

Bespoke piece  
Four Seasons Hotel  
Kuwait City

Front Cover  
Elle Decoration China  
February 2021



[家|廊]  
DECORATION

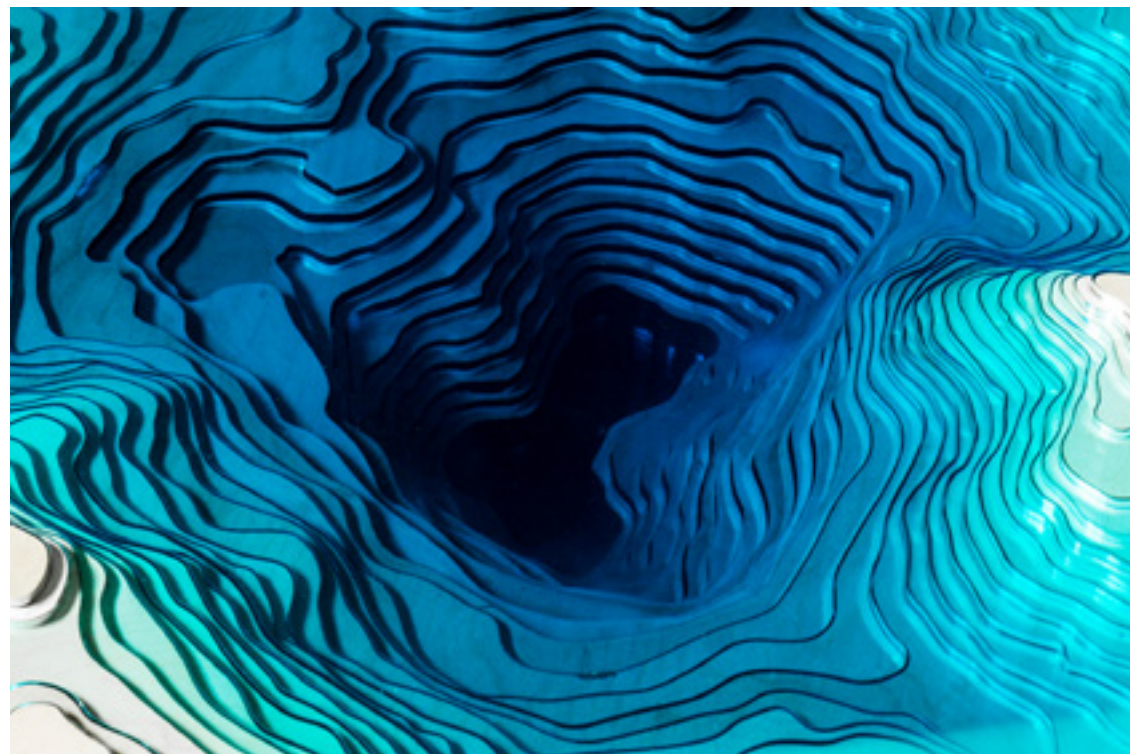




(L) 200cm (W) 55cm (H) 75cm  
New York City











Bespoke piece  
Miami





(L) 190cm (W) 95cm (H) 48cm  
London



A B Y S S D E S K  
(L) 220cm (W) 100cm (H) 75cm







Yacht edition







(W) 110cm (H) 47cm







Edition piece  
Taiwan

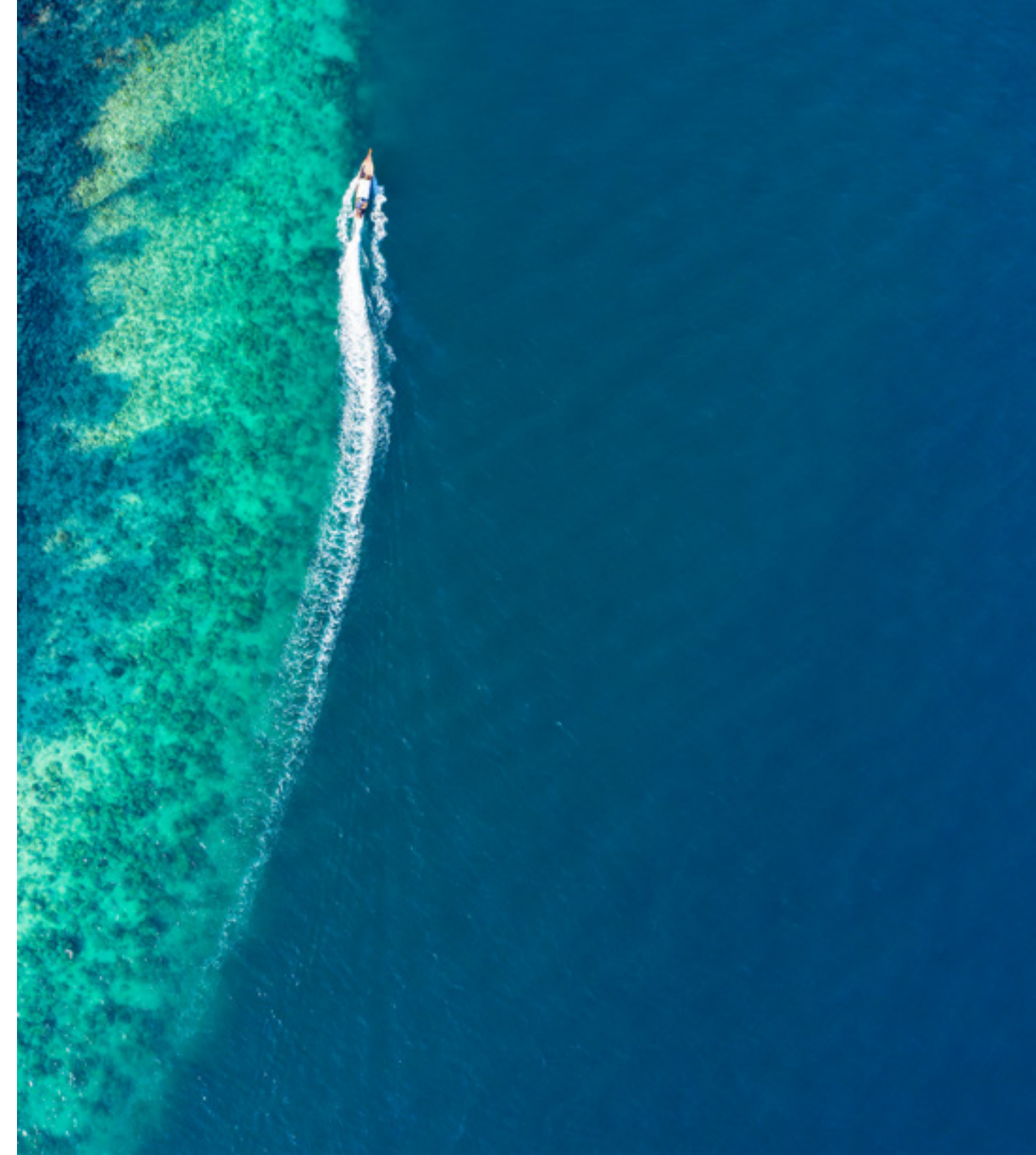






Edition pieces from £22,800.

Bespoke pieces available.







"God gave the sea the danger and the abyss, but it was in it that He mirrored the sky."

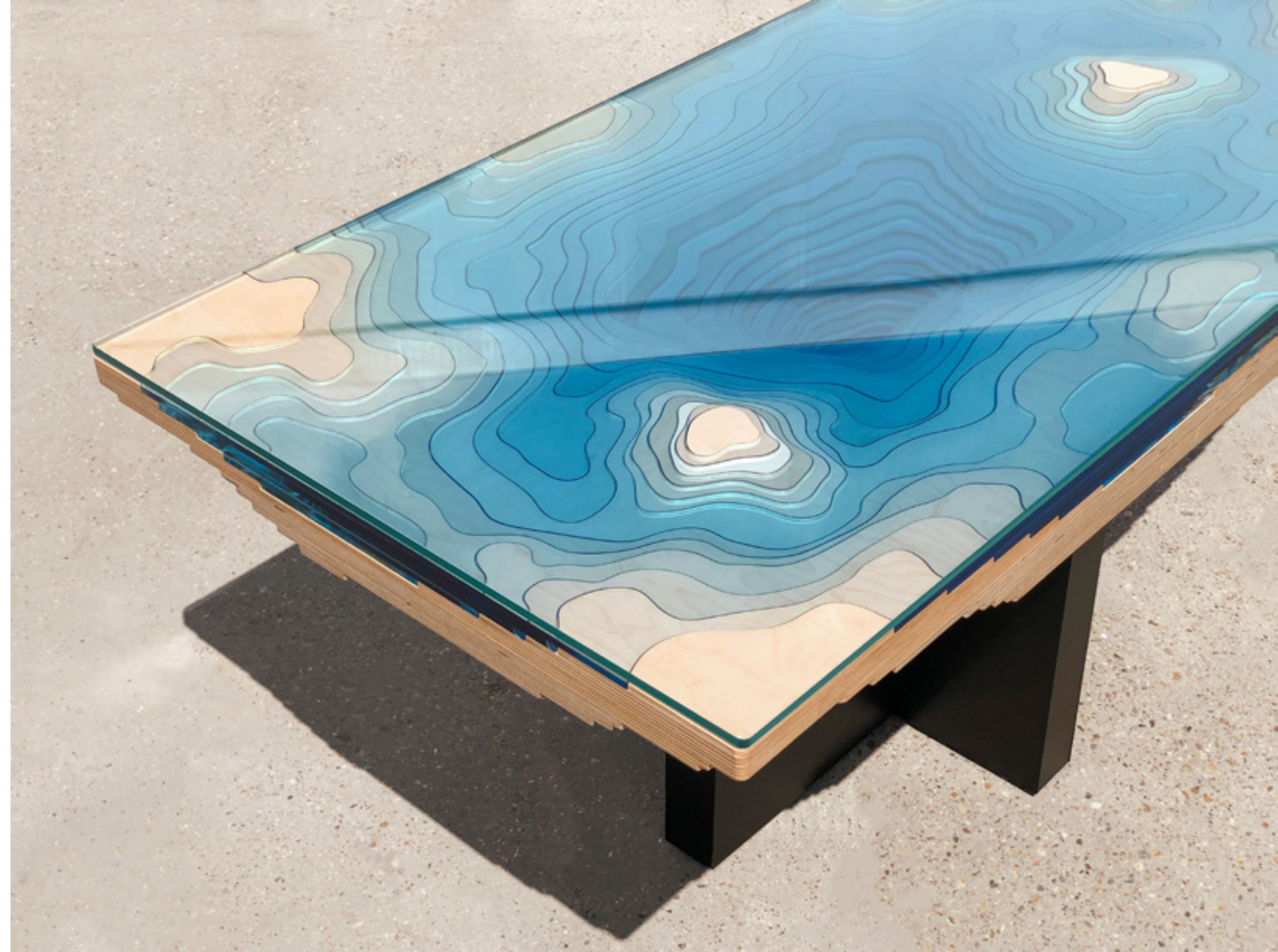
( F E R N A N D O   P E S S O A )





ABYSS DINING TABLE

(L) 180cm (W) 90cm (H) 75cm  
Riyadh



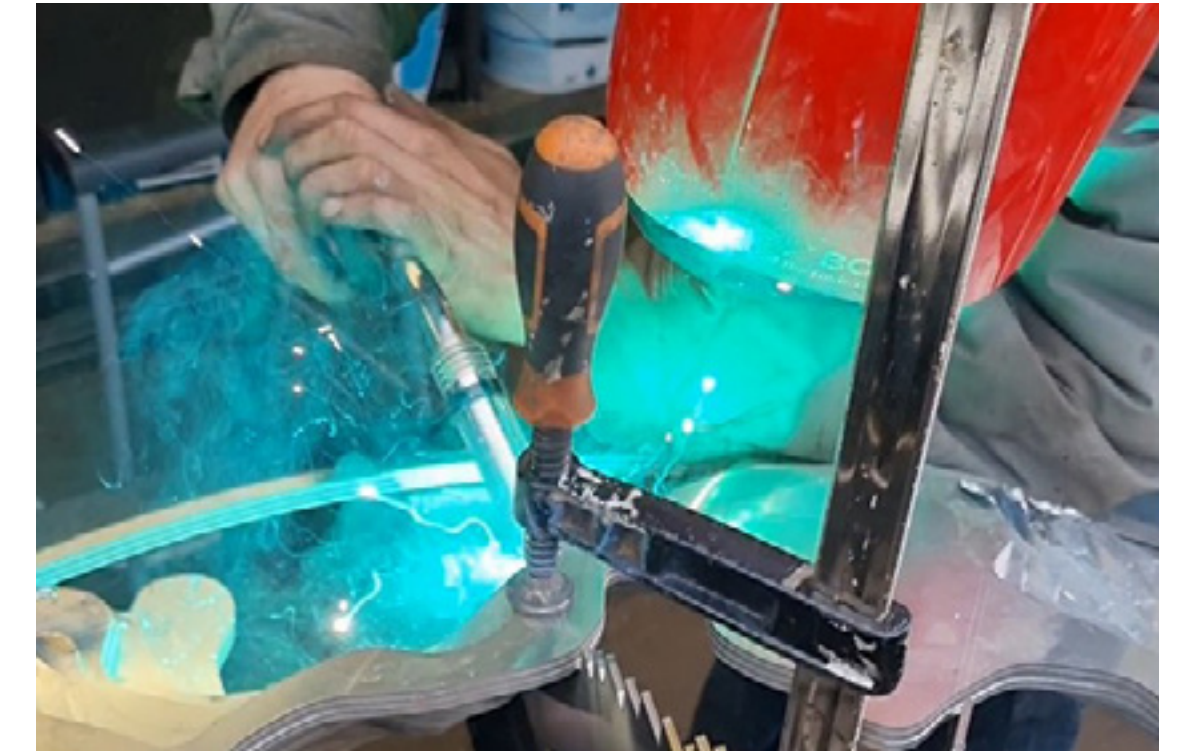








Each work is handmade to order here  
in our London studio using ethically  
sourced materials, including high-grade  
wood from FSC managed forests.





## C O N T A C T S

[sales@duffylondon.com](mailto:sales@duffylondon.com)

+44 (0)20 7193 8802  
[www.duffylondon.com](http://www.duffylondon.com)

D U F F Y  
L O N D O N